

## ⇒ Description

The Electricity Meter Test Equipment ELMA is design to provide automated calibration and testing of electricity meters. Due to its modular concept enables to tailor specifications to specific laboratory demand.

## ⇒ Highlights

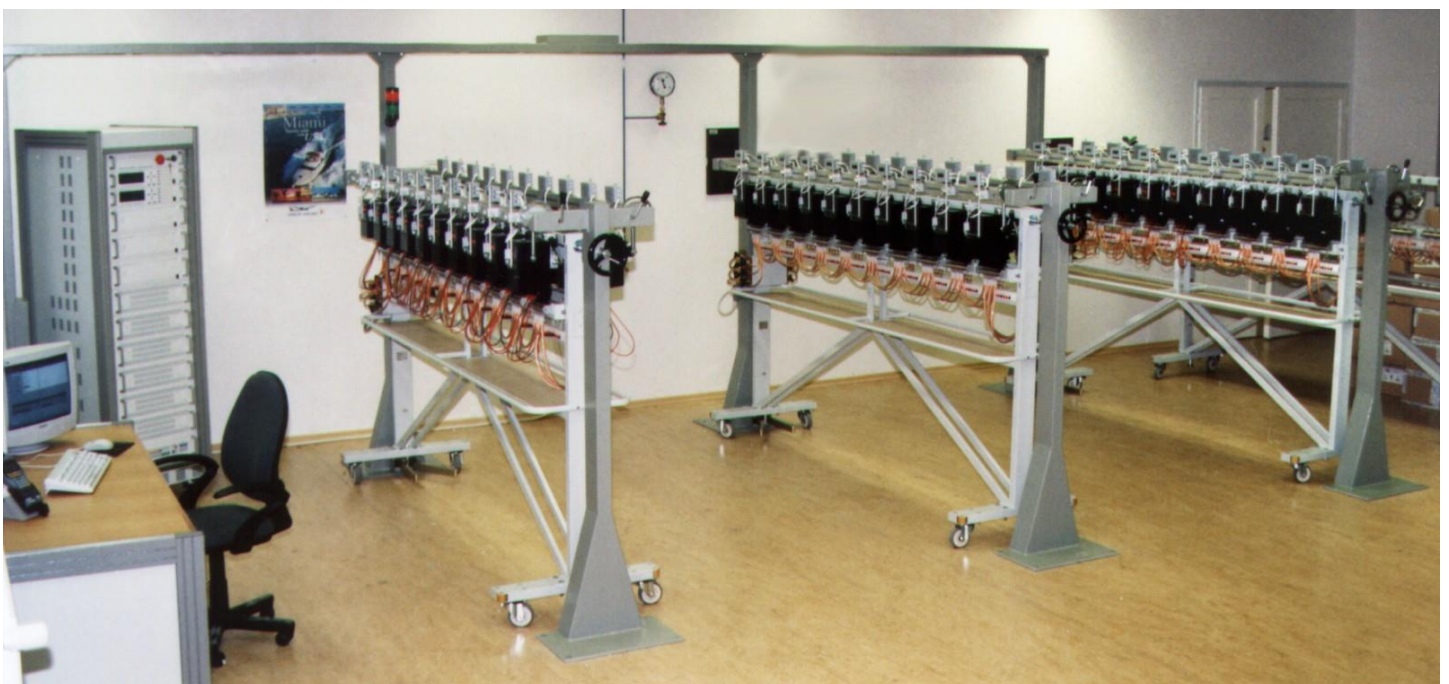
- The accuracy of the power and energy reference meter is available up to 0.01 %. The reference meter measures all main and influencing quantities inclusive harmonic analysis and distortion of the test signals.
- The available power and the maximum current of 240 A of extremely pure synthesized 4-quadrant test signal covers the needs of both precision and high capacity testing laboratories. The test signal can be created with user defined harmonic content and predefined signal shapes.
- The intelligent high resolution Local Evaluation Units use reflective optical sensors scanning the marks on meter's disk and passive sensors scanning the LED output of electronic meters. The sensors are insensitive to external light condition and posses auto-calibration capability eliminating manual adjustment. The optional optical communication channel enables simultaneous data exchange with electronic meters. The built-in remotely controlled dividers enable to evaluate high constant meters with light impulses up to 1 kHz.
- The handling system has capacity of several mobile meter trolleys with 20 tested meters each. The trolleys are prepared either for manual wiring of heavy current meters or can be equipped with quick-acting connectors for lower currents. Static version of handling system is also available.
- The optional precision electronically compensated transformers enable simultaneous test of electricity meters with interconnected current and voltage circuits.
- The wireless data acquisition Hand-Held Unit with integrated barcode laser scanner enables versatile local data acquisition from the tested meters.
- The supplied Control Software for Microsoft Windows enables multilingual operation with user definable vocabularies, user friendly configuration of testing procedures, database operations and Microsoft Office compatible user defined form of output documents to any system output device.
- Local net and database ensures automated data interchange, central evaluation and archivation in laboratories with multiple test equipments.

# Electricity Meter Test Equipment ELMA

Automated equipment for electricity meters testing



*Electricity Meter Test Equipment ELMA with Fixed Meter Handling System*



*Electricity Meter Test Equipment ELMA with Mobile Meter Handling System*